

Separate Components System Comparison

ESOTERIC



ANNIVERSARY
20th
ESOTERIC

The image features two Esoteric audio components against a dark background. The top component is a Transport Model P01/P01VU, a silver-faced unit with a digital display showing '1. 000' and several control buttons. The bottom component is a Monaural D/A Converter Model D-01/D01VU, also silver-faced, with a digital display showing '0.50'. The Esoteric logo is visible on the top of both units.

ESOTERIC

Monaural D/A Converter Model D-01/D01VU

Transport Model P01/P01VU
(External power supply is included)

Reference Standard
Super Audio CD/CD
Separate Player Component System

Stereo D/A
Converter
D-03



Super Audio
CD/CD
Transport
P-03

Super Audio CD/CD Transport

P-05

Stereo D/A Converter

D-05



Separates System Configurations

ESOTERIC



P-01/P01VU D-01/D01VU

- World class reference standard
- SACD/CD Transport
- Transport power supply
- Mono D/A converter
- Mono D/A converter

P-03/D-03

- Reference grade
- SACD/CD Transport
- Stereo D/A converter
(Dual mono)

P-05/D-05

- Audiophile grade
- SACD/CD Transport
- Stereo D/A converter
(Dual mono)

ESOTERIC 20th ANNIVERSARY

Positioning and Key Features

ESOTERIC



SACD/CD Reference System World's first mono-block DAC

- 4 piece / 1 system
- XLR: Multi channel
- 24bit PCM1704 x8/ch
- Word sync
- RAM Link (jitter reduction)
- i.LINK
- PCM up-convert
- 6N Copper wiring
- Rhodium plated AC inlets



SACD/CD Reference System

- 2 piece / 1 system - XLR: Stereo
- 1 bit DSD AD1955 x1/ch
- Word sync
- RAM Link (jitter reduction)
- i.LINK with flow rate control
- DSD to PCM convert (Transport)
- PCM up-convert
- 6N Copper wiring
- Rhodium plated AC inlets
- WBT RCA terminals



SACD/CD source system high end - 32 bit DAC

- Slim 2 piece / 1 system
- XLR: Stereo
- 32bit PCM/DSD AKM4397 x1/ch
- Word sync
- PLL2 re-clock
- i.LINK with flow rate control
- DSD to PCM convert (DAC)
- PCM up-convert
- VRDS-Neo VMK-V

ESOTERIC 20th ANNIVERSARY

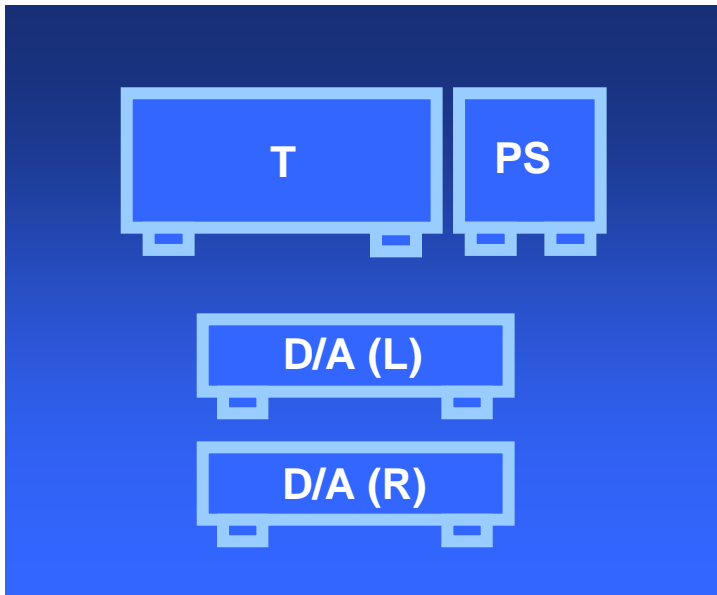
Transport Designs

ESOTERIC



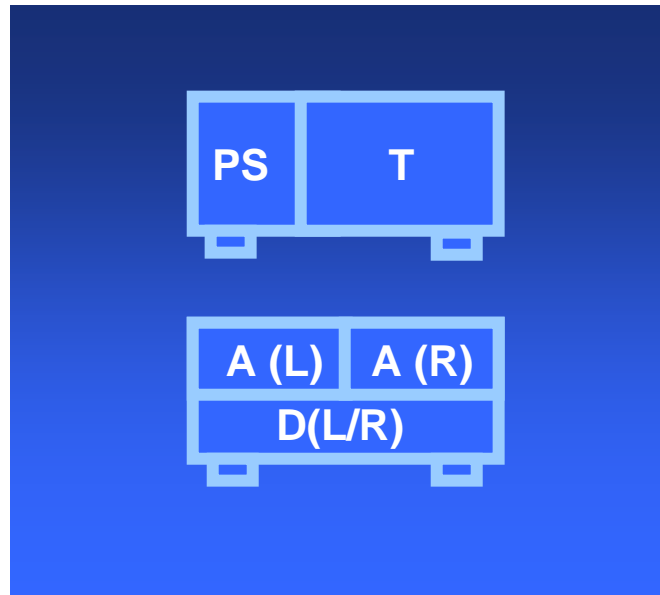
'01 series'

Completely separate chassis x4



'03 series'

"Chambered" chassis x 2



'05 series'

One piece chassis x 2



ESOTERIC 20th ANNIVERSARY

Transport Design Differences

ESOTERIC



'01 series'

Stream-lined shape
Large corner pieces
x 4

'03 series'

Stream-lined shape
Large corner pieces
(front only)

'05 series'

Small corner pieces
(front only)

ESOTERIC 20th ANNIVERSARY

Transport Internal Design Elements

ESOTERIC



'01 series'



'03 series'



'05 series'

T:10mm /10 lb. flamed mechanism support + aluminum bottom plate.
Pin-point feet x4
Solid steel VRDS



T:5mm steel plate mechanism support.
Pin-point feet x3
Die cast aluminum and steel VRDS

T:2mm steel plate +T:5mm steel plate with H:8mm stabilizer
(P-05)

T:2mm steel plate
(D-05)

Low profiled pin-point feet x3

New composite and steel VRDS mechanism (P-05)

Transport Mechanisms (VRDS-Neo)

ESOTERIC



ANNIVERSARY
20th
ESOTERIC

VRDS-Neo / Esoteric transport mechanisms

ESOTERIC



P-01

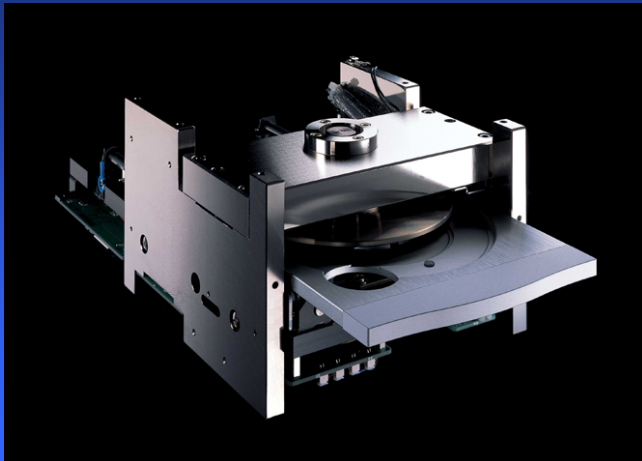


P-03

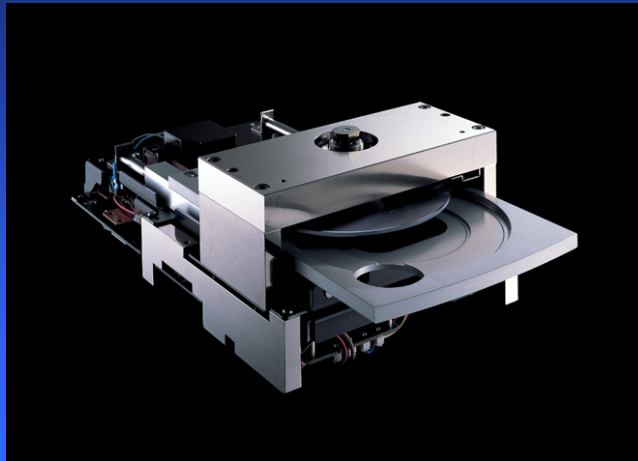


P-05

VMK-0



VMK-1.1



VMK-5

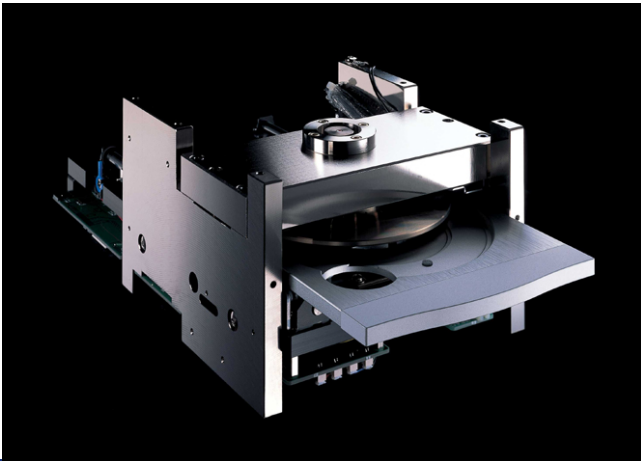


VRDS-NEO

ESOTERIC

P-01

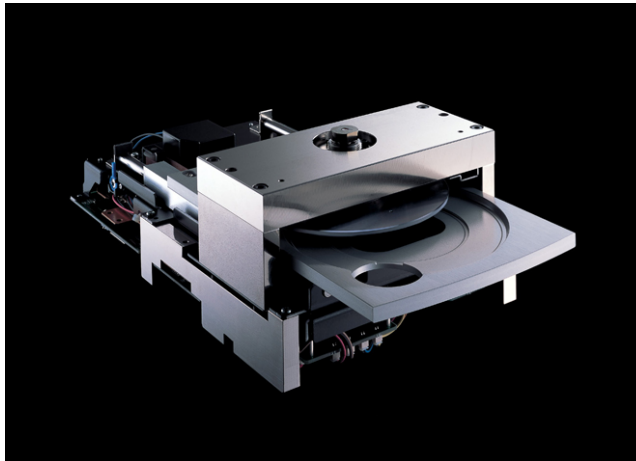
VMK-0



- Magnesium Turntable
- Custom steel ball bearings
- Non-RoHs VOSP pickup
- SS400 Steel T:20 mm bridge
- Al T:12 mm mechanism base
- SS400 1 piece bridge support
- Al tray with no shutter
- Speed controlled tray motion
- Exclusively used for the P-01

P-03

VMK-1.1



- Duralumin Turntable
- Custom ceramics ball bearings
- RoHs VOSP pickup
- SS400 Steel T:20 mm bridge
- Pressed steel mechanism base
- SS400 + Al 2 piece bridge support
- Al tray with shutter
- P-03/P-03 Uni/X-01D2/UX-1Pi

P-05

VMK-5



- Aluminum and polycarbonate hybrid turntable
- No ball bearings
- RoHs VOSP pickup
- Pressed Steel + BMC (Bulk molding compound) resin bridge
- Pressed steel mechanism base
- BMC resin tray with no shutter
- P-05/X-05

ESOTERIC 20th ANNIVERSARY

Digital Output / D to D conversion

ESOTERIC



P-01

- ES-LINK = 5.1ch
- i.LINK = 6P x2
- PCM up-convert (x1/x2/x4)



P-03

- ES-LINK = 2ch
- i.LINK = 6P x1
- PCM up-convert (x1/x2/x4)
- PCM to DSD convert



P-05

- ES-LINK = 2ch
- i.LINK = 6P x1/4P x1
- PCM up-convert (off/x2/x4)

ESOTERIC

D/A Converter Comparisons

ESOTERIC



ANNIVERSARY
20th
ESOTERIC

Positioning and Key Features

ESOTERIC



D-01

- The world's first mono-block DAC
- The reference PCM audio DAC

- 24bit PCM1704 x8/ch
- Word sync (in / out)
- RAM Link (jitter reduction)
- i.LINK
- PCM up-convert
- 6N Cu wiring
- Rhodium plated AC inlets



D-03

- The reference PCM / DSD DAC

- 1bit DSD AD1955 x1/ch
- Word sync (in / out)
- RAM Link (jitter reduction)
- i.LINK with flow rate control
- PCM up-convert
- 6N Cu wiring
- Rhodium plated AC inlets
- WBT RCA terminals



D-05

- The world's first 32 bit DAC
- High end PCM / DSD DAC

- 32bit p. DSD AKM4397 x1/ch
- Word sync (in/out)
- PLL2 re-clock
- i.LINK with flow rate control
- PCM up-convert
- DSD to PCM convert

ESOTERIC 20th ANNIVERSARY

DAC Devices per Channel



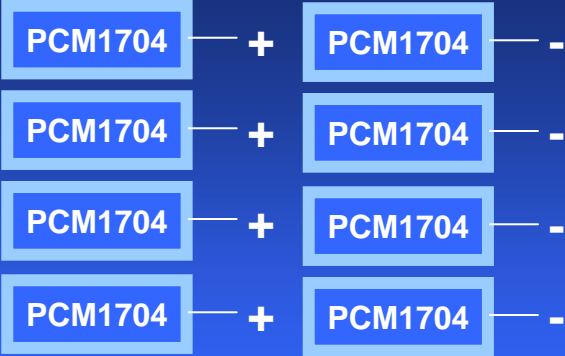
D-01



D-03



D-05



PCM exclusive
24 bit



DSD / PCM
1 bit



DSD / PCM
1 bit (32 bit processing)

Digital input / Digital filter(*)

ESOTERIC



D-01

- XLR x2
- i.LINK = 6P x2
- Coaxial x1

Digital Filter:

- FIR/RDOT/FIR+RDOT/Off



D-03

- XLR x2
- i.LINK = 6P x2
- Coaxial x2
- Optical x1

Digital Filter:

- On (wide) / Off



D-05

- XLR x2
- i.LINK = 6P x1/4P x1
- Coaxial x1
- Optical x1

Digital Filter:

- Wide/Narrow
- PCM up-convert (off/x2/x4)
- PCM to DSD convert

ESOTERIC

* Digital filter is for PCM signal use only

ESOTERIC

